

ENGINEERING  
YOUR SPRAY SOLUTION

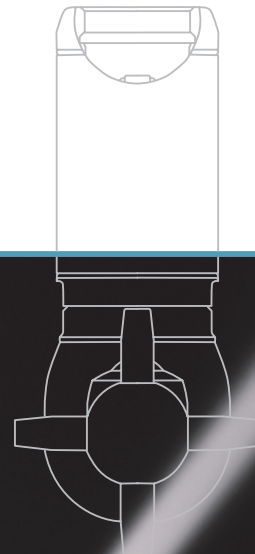
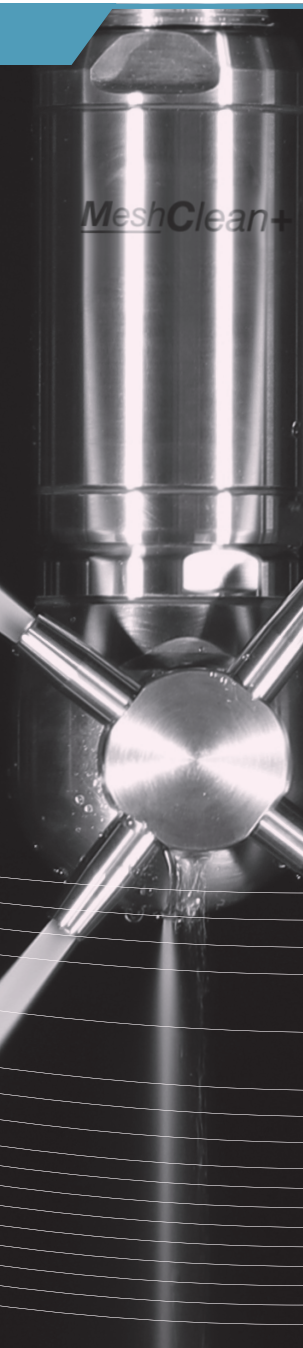


NEW

# »» HIGH IMPACT TANK CLEANING MACHINE MESHCLEAN+

Series 5T5

GENERAL INDUSTRY



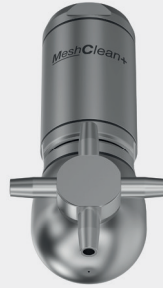
# High impact tank cleaning machine

## MeshClean+

### Series 5T5

#### Features:

- High efficiency thanks to especially powerful solid jet nozzles
- Also suitable for large tanks with persistent soiling
- Active self-cleaning through special nozzle geometry
- Particularly low-maintenance



**Function video**  
[www.lechler.com/de-en/medialibrary/videos-general-industry](http://www.lechler.com/de-en/medialibrary/videos-general-industry)  
 Or scan the QR code.

#### Series 5T5

#### Technical data:



**Maximum operating temperature**  
 150 °C  
 150 °C (ATEX)



**Maximum ambient temperature**  
 150 °C  
 150 °C (ATEX)



**Installation**  
 Operation in every installation position



**Bearing**  
 Ball bearing



**Material**  
 Stainless steel 1.4404 (316L), PTFE, PEEK, EPDM or FKM



**Weight**  
 4.0 kg



**Surface quality**  
 $Ra \leq 0.8 \mu m$



**Surface quality**  
 $Ra \leq 1.6 \mu m$



**Steam suitability**  
 Suitable



**Insertion diameter**  
 120 mm



**Recommended filter**  
 Line strainer with a mesh size of 0.2 mm/80 mesh



**Recommended operating pressure**  
 5 bar



**Adapter**  
 1 1/2" BSP is compatible with HygienicFit



**Rotation monitoring**  
 Sensor-compatible

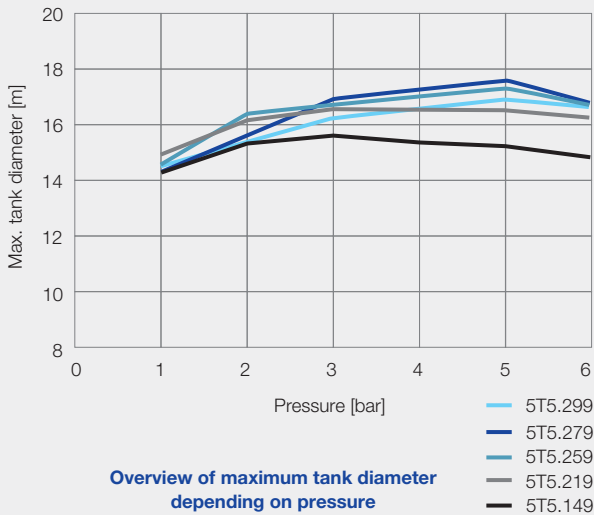


**Maintainable**

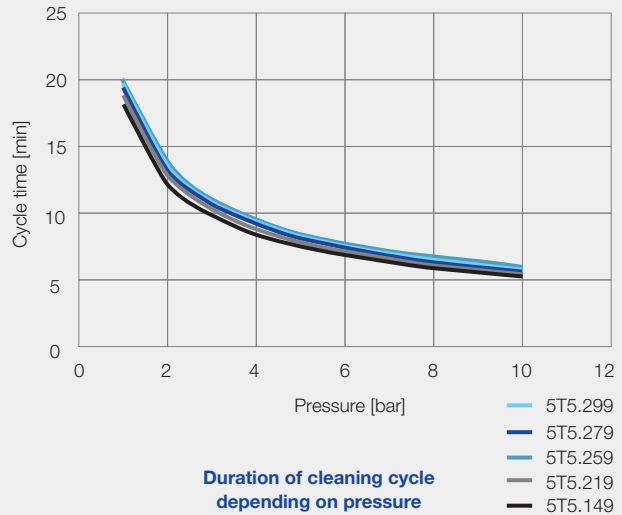


#### Max. tank diameter

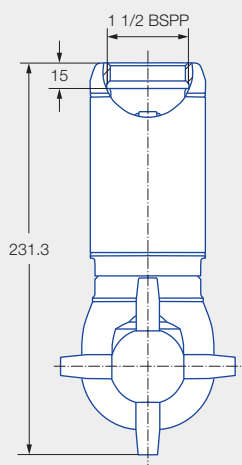
The specified maximum tank diameter applies to the recommended operating pressure and is indicative only. The type of soiling is also decisive for the cleaning result.



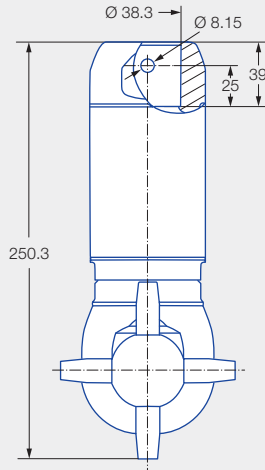
#### Duration of cleaning cycle



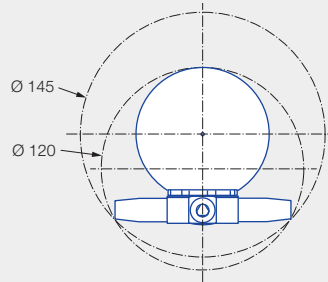
Dimensions in mm.



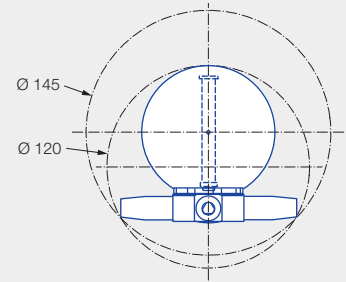
Female thread



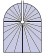
Dimensions of slip-on connection according to ASME-BPE (OD tube)



Insertion diameter and interference circle diameter of the threaded connection



Insertion diameter and interference circle diameter of the slip-on connection

| Spray angle   | Ordering no.      |            |           |                           |           | Narrowest cross-section Ø [mm] | Quantity x Ø nozzle [mm] | V̇ water [l/min]                    |     |            |      | V̇ water at 5 bar [m³/h] | Max. tank diameter [m] |
|---|-------------------|------------|-----------|---------------------------|-----------|--------------------------------|--------------------------|-------------------------------------|-----|------------|------|--------------------------|------------------------|
|   | Type              | Connection |           |                           |           |                                |                          | p [bar] (p <sub>max</sub> = 15 bar) |     |            |      |                          |                        |
|   |                   | 1 1/2 BSPP |           | 1 1/2" slip-on connection |           |                                |                          | 2.0                                 | 3.0 | 5.0        | 10.0 |                          |                        |
|   |                   | EPDM       | FKM       | EPDM                      | FKM       |                                |                          |                                     |     |            |      |                          |                        |
| 360°<br> | <b>5T5.149.1Y</b> | <b>AS</b>  | <b>25</b> | <b>TF15</b>               | <b>34</b> | 4.40                           | 4 × 4.40                 | 70                                  | 86  | <b>111</b> | 157  | 6.6                      | 15.2                   |
|   | <b>5T5.219.1Y</b> | <b>AS</b>  | <b>25</b> | <b>TF15</b>               | <b>34</b> | 5.55                           | 4 × 5.55                 | 107                                 | 131 | <b>169</b> | 239  | 10.1                     | 16.5                   |
|   | <b>5T5.259.1Y</b> | <b>AS</b>  | <b>25</b> | <b>TF15</b>               | <b>34</b> | 6.45                           | 4 × 6.45                 | 132                                 | 162 | <b>209</b> | 296  | 12.5                     | 17.3                   |
|   | <b>5T5.279.1Y</b> | <b>AS</b>  | <b>25</b> | <b>TF15</b>               | <b>34</b> | 7.10                           | 4 × 7.10                 | 150                                 | 184 | <b>238</b> | 336  | 14.2                     | 17.6                   |
|   | <b>5T5.299.1Y</b> | <b>AS</b>  | <b>25</b> | <b>TF15</b>               | <b>34</b> | 7.75                           | 4 × 7.75                 | 170                                 | 209 | <b>269</b> | 380  | 16.1                     | 16.9                   |

NPT threads on request.

**Information on operation**

Compressed air can be used only for a short time for blowing dry. Use above the recommended pressure will have a negative effect on the cleaning result and wear.

**The plus**  
for large tanks with  
persistent soiling  
**MeshClean+**

**ENGINEERING  
YOUR SPRAY SOLUTION**



**Lechler GmbH · Precision Nozzles · Nozzle Systems**  
**Ulmer Strasse 128 · 72555 Metzingen, Germany · Phone +49 7123 962-0 · [info@lechler.de](mailto:info@lechler.de) · [www.lechler.com](http://www.lechler.com)**

Edition 09/24 · EN · PDF  
Subject to technical modifications or mistakes.